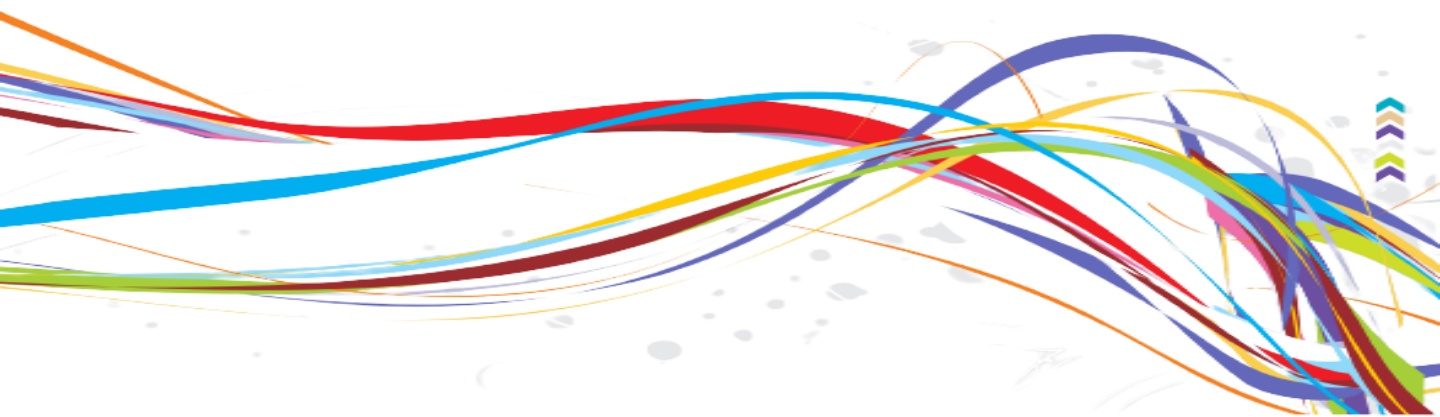


# Water Bath

WB100-1(F)/WB100-2(F)/WB100-4(F)/WB100-6(F)



## MAIN FEATURES

Anti-dry technology.

Concave surface to avoid liquid.

No interface, no welding seam, stainless steel material.

Sizes of holes can be customised.

Bi-integral A/D converter.

Water Bath Technical Data					
Temp Variation °C	Model	Chamber Capacity	Power	Temp. Distinguish Ability °C	Work Chamber Size
Room temp to 99.9°C	WB100-1	3 Liters	300W	0.1°C	16X16X13cm
	WB100-1F (Prevent dry burn)				
	WB100-2	6 Liters	600W	0.1°C	30X15X14cm
	WB100-2F (Prevent dry burn)				
	WB100-4	12 Liters	800W	0.1°C	30X30X14cm
	WB100-4F (Prevent dry burn)				
	WB100-6	17 Liters	1200W	0.1°C	45X30X13cm
	WB100-6F (Prevent dry burn)				



Digital display thermostatic



High precise temperature control



Stainless steel tank



High corrosion resistance

## PRODUCT DETAIL



Stainless Steel Tank



PP ring cap



Working panel



Handle

Switch

Quality upgrade

## Concave Control panel

Concave surface to protect the panel being destroyed by the overflowed.  
Double digital display easy to show temperature.



More humane product

## Adjustable Cap

Ring cap made of PP, much durable and better sealing.  
The hole size could be adjusted by the user



More humane product

## Stainless Steel Heating Tube

Precisie temperature control and heating.  
To keep it at good working performance, pls dry off while finished to use



Quality upgrade

Anti-dry technology, safer

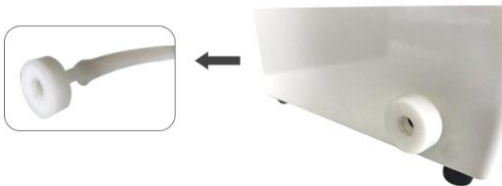
Anti-dry function: automatically stop heating when the water level is lower than the heating tube, which is safer.



More humane product

Invisible Outfall

With a plug - out pipe, beautiful and durable and convenient



More convenient to use

Stainless Steel Tank

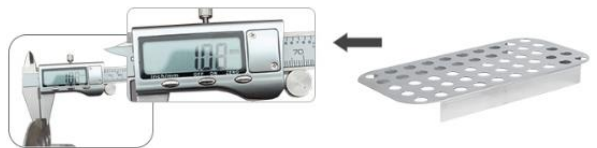
The tank using amolding technology.  
No-interface, no welding seam, to avoid rusting and leaking.  
The circular arc form would be easy to clean



More humane product

Stainless steel holder

The stainless steel carrier in the tank, the thickness is more than 1mm.



**Authorized Distributor**  
**ALFA DIAGNOSTIK SDN BHD**  
**No 36, Taman Perindustrian Jaya, Jalan PJU 1A/13, Ara**  
**Damansara, 47301, Petaling Jaya, Selangor**  
**Phone: 03-78321000**  
**www.alfadiagnostik.com.my**