

BS 30 Refrigerated Water Bath



N-Smart

BS 30 Refrigerated Water Bath is designed to be used for various applications and tests performed between 0°C and 80°C with the power of N-Smart™ control system

BS 30 is used for bacteria and cell culture, coagulation tests, determination of coliforms, enzyme reactions and for many other applications in research and industrial laboratories. By means of the optional external circulation pump, BS 30 can be used as refrigerated and heating circulator to regulate the temperature of the external systems.

CAREFULLY DESIGNED BODY

- Solvent resistant epoxy-polyester powder coated stainless steel outer body
- Easy to clean stainless steel chamber
- Efficient insulation consisting of high density injected polyurethane
- Excellent temperature uniformity and stability with powerful circulation system even at low temperatures

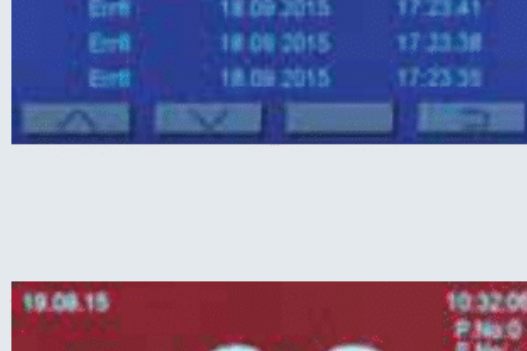
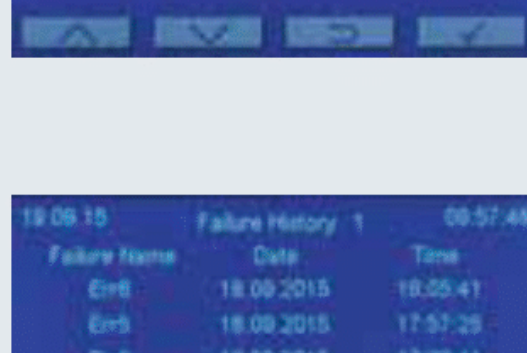
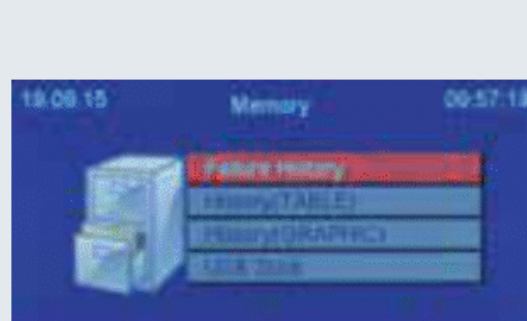
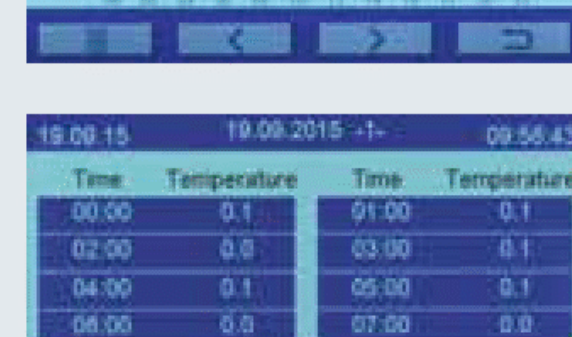
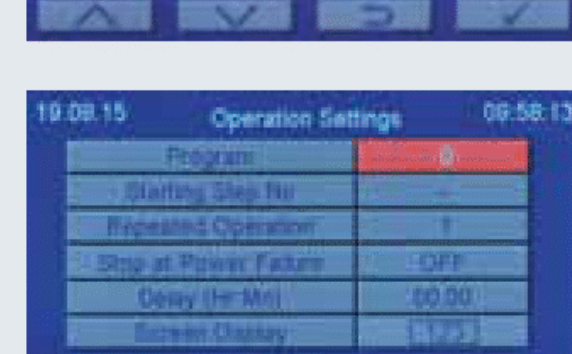
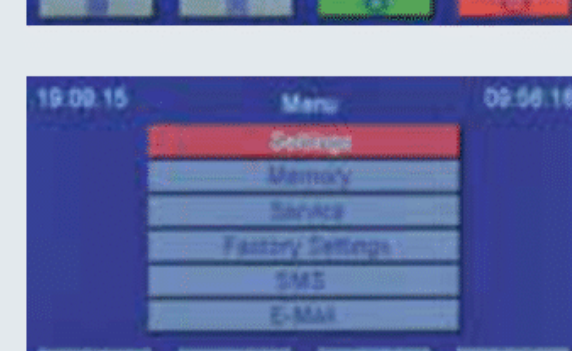
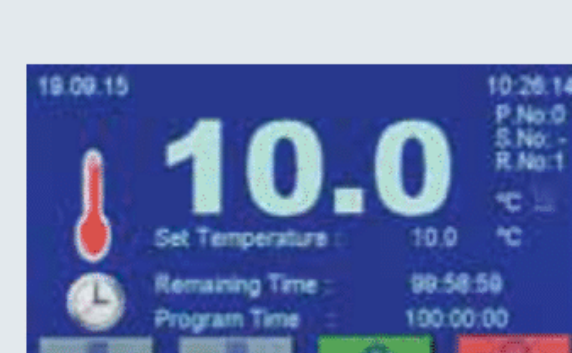


EFFECTIVE INSULATION AND COOLING

- Protection against ambient air temperature fluctuations with high density injected polyurethane insulation material
- Proportional cooling and PID heating system

RELIABLE AND POWERFUL CONTROL SYSTEM : N-Smart™

- BS 30 Refrigerated Water Bath are powered by N-Smart™ instrument management system which is based on microprocessor technology and it is designed to simplify operation and guarantee the safety of stored samples
- Maximum information - 4,3" colourful LCD display to follow easily operating parameters
- Versatile & easy use – Four context-sensitive function keys
- Secured run parameters and data - Password protected menu
- With 5 Language options: Turkish, English, French, Russian, Spanish
- Use your preferred language – Possibility of editing the text into any language using the Latin alphabet as option
- Immediate understanding - Icons make the operations easier
- Full traceability - Operating parameters tracked digitally or graphically against time
- Alarms clearly displayed - Red colour warns the user in case of any alarm condition
- Fault analysis speeds recovery - Detailed description of the failure with HELP menu
- Longer life, lower energy use - Screen saver decreases the brightness of the display
- Massive data storage - Internal memory stores the records up to ten years with one hour intervals, digitally and graphically
- Failure analysis support – Service staff can recall stored failure history
- More efficient servicing – Password protected service section for software updates, calibration and technical parameter setting



FULL TRACEABILITY AND SAFETY WITH OPTIONAL NuveCom™ COMMUNICATION UNIT

- Data always available - Communication unit for traceability and remote access
- Secure data backup – Save parameters on memory stick connected to USB port
- Selectable data recording frequency - Set the recording intervals as 10 or 30 seconds, 1, 5, 30 or 60 minutes to store in a memory stick
- World-wide access - Ethernet port for internet connection
- Local area networking - Remote access via ethernet connection
- Get rapid support – Can send e-mails with the details of any failure
- The remote access and control – NuveCloser™ software to access N-Smart™. Get all the information remotely or control and programme your NUVE product wherever you are.
- Fast corrective action - AlerText™ GSM alarm module can send the details of any alarm condition to up to 5 mobile phone numbers, including emergency service backup 7/24.



TECHNICAL SPECIFICATIONS

Useful Volume	17 litres
Tank Volume	30 litres
Useful Water Height	170 mm
Pump Capacity	16 lt/min
Temperature Range	0°C / 80°C
Control System	Programmable Microprocessor N-Smart™ Control System
Display	4,3" Colourful LCD Display
Temperature Set and Display Sensitivity	0,1°C
Temperature Variation @ 37°C	± 0,1°C*
Temperature Fluctuation @ 37°C	± 0,01°C*
Programmable Alarm Limits	1°C / 10°C
Number of Program Memory	20
Programmable Number of Steps	20
Number of Program Repetition	1-99
Timer	1 min. – 100 Hours + Hold Position
Delayed Start Timer	1 min. – 100 Hours
Alarm	Audible and Visual
Insulation	High Density Injected Polyurethane
Internal Material	Stainless Steel
External Material	Epoxy-Polyester Powder Coated Stainless Steel
Power consumption	2000 W
Power Supply	230 V, 50/60 Hz.
Tank Dimensions (WxDxH) mm.	297x505x191
External Dimensions (WxDxH) mm.	336x608x626
Package Dimensions (WxDxH) mm.	430x690x680
Net / Package Weight kg.	37 / 43

*At 22°C ambient temperature with closed lid

FACTORY FITTED OPTIONS

- BS 30 S External circulation system

OPTIONS

- A 08 190 NuveCom™ Communication Unit
 USB port to access the temperature records on memory stick
 World-wide access via ethernet port with NuveCloser™
 Rapid support by sending e-mails with the details of the failure
 RS 232 port for PC or AlerText™
- A 08 191 AlerText™ GSM alarm module (should be ordered with A 08 190)
- A 08 195 NuveCloser™ Software CD with 3 m. RS 232 cable
 (should be ordered with A 08 190)